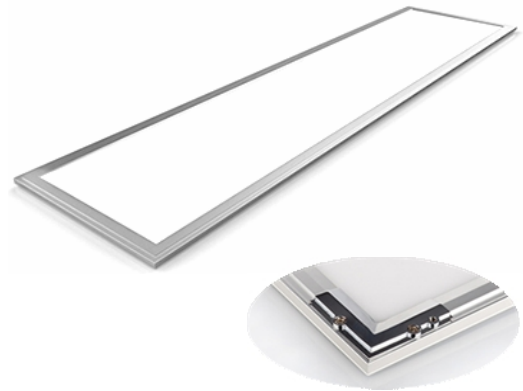


Luminux is proud to present you the Nexus Facet Multifunction LED Panel Light which is perfect for the general office, retail shops, supermarkets, and most of commercial lighting. This ultra slim and elegant design comes with the cutting edge LED technology and heat dissipation technology. It adopts LED Edge Lite technology to minimize the glare effect. The soft and uniform illuminance creates a high quality visual environment for the users. It is now possible to reduce energy consumption and maintenance costs without compromising on light quality and ambience.

Features

- Ultra Slim and Elegant Design
- Multifunction: Recess Mount, Surface Mount, Suspended Hanging
- AL6063-T5 Aluminum Edge Cooling System
- Super Light Transmission PMMA Light Guide
- Ultra-easy Installation
- Powered Options: 15W, 22W, 40W and 54W
- Dimming Option: EcoSystem, DALI, 0-10V, TRIAC
- Super Long Life - 70% maintenance of lumen after 50000 hours
- Super High Color Rendering (80 CRI)
- Soft Beam Angle: 120°
- Lumen Ratio: Uplight: 20%, Downlight: 80%
- Power factor >0.9
- RoHS Compliant
- UV and IR Free

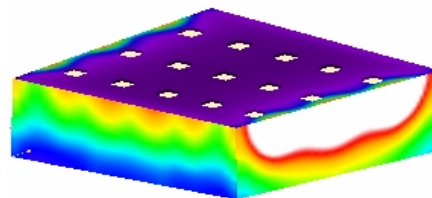


Product Offering

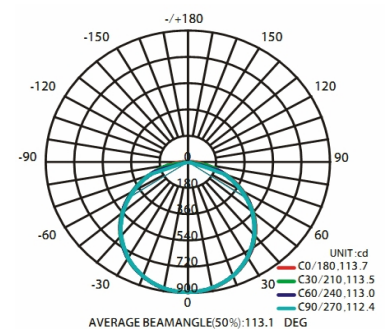
Item	LED Color	Beam Angle	Finishing	Power Supply	CRI	Watt	Lumen	Note
Nexus Facet	3000K	120°	Alum Frame	220VAC	80	15	1275	Remote Driver
	4000K					22	1870	
	5000K					40	3400	
						54	4590	

Application Information

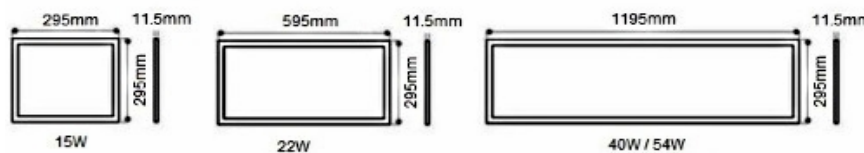
- General Office
- Supermarket
- Retail Shops
- Commercial Lighting



Photometrics



Dimension



Suspended Cable Length: 1000mm