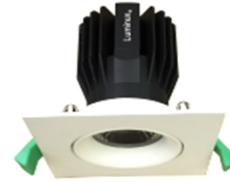


Luminux is proud to present you the Daniel Alexandra design Aqua-Mini SQ series directional LED downlight which is perfect for the retail shops, hotels, window displays, and most of commercial and architectural lighting. This unique Italian simple and classic design comes with the cutting edge LED technology and heat dissipation technology. It adopts multichips-array LED system (Cree, USA) technology which can produce up to 1580 lumen with 17W only. The highest color rendering option can be up to 95CRI. It is now possible to reduce energy consumption and maintenance costs without compromising on light quality and ambience.

Features

- Italian Simple and Classic Design
- Aluminum Cooling System and Glass Cover
- Cree, USA Multichips-Array LED System
- Ultra-easy Installation
- Power Option: 17W
- Directional: +/-30°
- Super Long Life - 70% maintenance of lumen after 50000 hours
- Super High Color Rendering (84 or True Color 95 CRI)
- Wide Selection of Beam Angles:
- LENS Options: 15°, 24°, 36°, 60°. Reflector Options: 15°, 28°, 40°, 60°
- Dimming Options: EcoSystem, DALI, 0-10V, TRIAC, DMX
- Power factor: >0.94
- RoHS Compliant
- UV and IR Free



Product Offering

Item	LED Color Options	Beam Angle Options	Finishing	Power Supply	CRI	Watt	Lumen	Note
Aqua-MSQ17W	2700K	LENS: 15°	□ White	220-240VAC	84	17W	1380--1580	Remote LED Driver
	3000K	LENS: 24°	■ Black					
	4000K	LENS: 36°						
	5000K	LENS: 60°						
Aqua-MSQ17W	2700K True Color	Reflector: 15°		220-240VAC	95	17W	1040-1290	Remote LED Driver
	3000K True Color	Reflector: 28°						
	4000K True Color	Reflector: 40°						
	5000K True Color	Reflector: 60°						

Application Information

- Retail Shops
- Hotels
- Window Display
- Spot Lighting
- Commercial Lighting
- Office Lighting

Dimension

