

VIRGO

The Luminux Virgo series track mount spotlights are the ideal replacement for metal-halide or halogen track/spotlight systems in commercial and residential applications. The fittings offer excellent light output with low energy consumption.



SPECIFICATIONS

Input Voltage	12VDC
LED Quantity	3 x 3W per unit
Power Consumption	9W per unit
Maximum Units Per Track	4 units
LED Classification	High Power Cree 3W(700mA)
Color Temperature	Natural White / Warm White
Life Span	50,000hrs
Operation Temperature	-20°C ~ +50°C
Standard Lens Angle	40°
Weight	240g (Exclude Driver and Track)
Dimming	No
Exclusive LED Driver	Included



DIMENSION



9w



50w



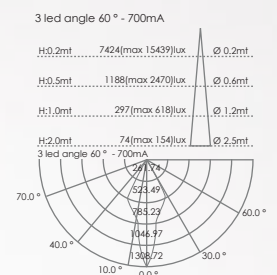
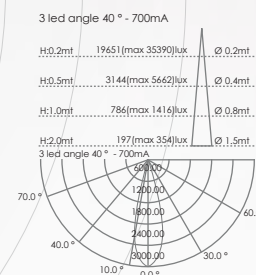
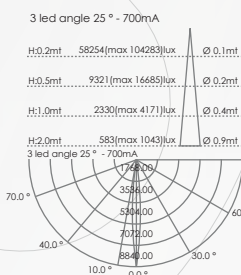
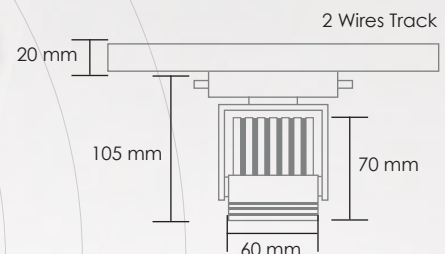
50000hrs



1000hrs

3000 - 4000k 5000 - 6000k

CRI:Ra(80)



LED Driver: Luminux VA-12030M: Input 170 - 250VAC, Output 12VDC

VIRGO