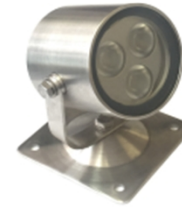


Luminux is proud to present you the SG023 which is perfect for the path, lobby, garden, pool and ceiling. This unique Italian one piece stainless steel housing design and tempered glass cover makes the product in highest IP68 protection rating. With three high power LED (Cree, USA) build-in design which can produce up to 300 lumen by 3W only, it is now possible to reduce energy consumption and maintenance costs without compromising on light quality and ambience.

Features

- Superior Italian Design
- 316 Stainless Steel Housing
- Tempered Glass Light Cover
- 360° Adjustable
- IP68 Protection Rating
- Ultra-easy Surface Mount Installation (Optional for long stand)
- Build-in Three High Power LED (Cree, USA)
- Dimming Options: 0-10V, DALI, FREELED, EcoSystem, DMX, TRIAC
- Super Long Life - 70% maintenance of lumen after 50000 hours
- Super High Color Rendering (85CRI)
- Wide selection of Color
- RoHS Compliant
- UV and IR Free



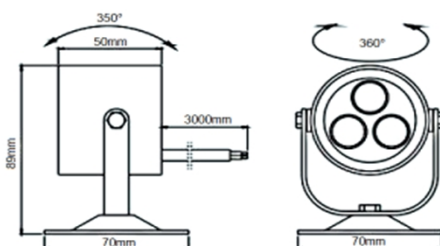
Product Offering

Item	LED Color	Lens angle	Finishing	Power Supply	mA	Watt	Lumen	Connection
SG023	White	20°	■ 316 Stainless Steel	Constant Current	350	3	300	Series
	Warm-White	60°		12/24VDC				Parallel
	Red							
	Green							
	Blue							
	Amber							
	RGB (Edison)	45°		Constant Current	350	9W	RGB	Series

Application Information

- Indoor and outdoor Spotlight
- Ceiling Mount
- Balcony Wall
- Swimming Pool
- Aisle
- Garden
- Walls
- Artwork Spotlight
- Universal Applications

Dimension



SG023RGB