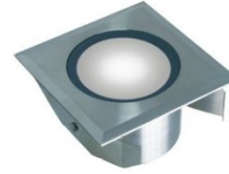


Luminux is proud to present you the SG150SQ waterproof LED light which is perfect for the path, lobby, garden, pool and any narrow space. This unique Italian one piece 316 stainless steel housing design and tempered glass cover makes the product in highest IP68 protection rating. With three high power LED (CREE, USA) build-in design which can produce up to 300 lumen by 3W only, it is now possible to reduce energy consumption and maintenance costs without compromising on light quality and ambience.

Features

- Superior Italian Design
- 316 Stainless Steel Housing
- Tempered Glass Light Cover
- IP68 Protection Rating
- Ultra-easy Installation
- Build-in Three High Power LED (Cree, USA)
- Dimming Options: 0-10V, DALI, FREELED, EcoSystem, DMX, TRIAC
- Super Long Life - 70% maintenance of lumen after 50000 hours
- Super High Color Rendering (85CRI)
- Wide selection of Color
- RoHS Compliant
- UV and IR Free



Product Offering

Item	LED Color	Lens angle	Finishing	Power Supply	mA	Watt	Lumen	Connection
SG150SQ	White	Anti-glare	Stainless Steel	Constant Current	350	3	300	Series
	Warm-White			12/24VDC				Parallel
	Red							
	Green							
	Blue							
	Amber							
	RGB (Cree, USA)			Constant Current				350
SG550SQ	RGB (Lumina)		Constant Current	350	7	RGB	Series	

Application Information

- Indoor and outdoor spotlight / general Lighting
- Indoor and outdoor path
- Performance square
- Balcony deck
- Aisle
- Corridor
- Garden
- Walls
- Steps
- Pool

Dimension

