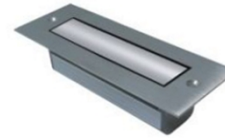


Luminux is proud to present you the WG200F LED wall / ground light. It produces awesome light effect on the wall. This unique Italian design makes product looks fabulous and luxury. The design is made by 316 stainless steel cover and aluminum body, with IP67 protection rating. With 3 high power LED (Cree, USA) build-in design which can produce up to 300 lumen by 3W only, it is now possible to reduce energy consumption and maintenance costs without compromising on light quality and ambience.

Features

- Superior Outlook Design
- 316 Stainless Steel and Tempered Glass Cover, Aluminum Housing
- IP67 Protection Rating
- Ultra-easy Installation
- Build-in 3 High Power LED (Cree, USA)
- Dimming Options: 0-10V, DALI, FREELED, EcoSystem, DMX, TRIAC
- Super Long Life - 70% maintenance of lumen after 50000 hours
- Super High Color Rendering (85CRI)
- Anti-Glare Frosted Cover
- RoHS Compliant
- UV and IR Free



Product Offering

Item	LED Color	Lens angle	Finishing	Power Supply	Input	Watt	Lumen	Connection		
WG200F	White	120°	316 Stainless Steel & Tempered Glass Cover Aluminum Body	Constant Current	350mA	3	300	Series		
	Warm-White							Parallel		
	Red							Parallel		
	Green									
	Blue									
	Amber									
	RGB				Constant Current	350mA	3	RGB	Series	

Application Information

- Indoor and outdoor Path
- Wall Washer
- Corridor
- Car Path
- Walls

Dimension

